



THE RECTANGULAR TOWER

A New Destination

City North Finsbury Park London, N4

Welcome to City North, set across four sleek and stylish buildings including two awe-inspiring towers, this exclusive collection of spacious suites, 1, 2, 3 & 4 bedroom apartments, duplexes & penthouses offers you the very best of 360° living, only 15 minutes from the heart of the City of London.

CITY NORTH

2

CITY NORTH

3

Computer generated image of City North from Finsbury Park.

A New Landmark for London

City North is a new landmark and a vibrant, cosmopolitan development in Finsbury Park. Integrated within a growing cultural community, it is only moments from underground and mainline stations that can transport you to the sights and attractions of central London within minutes.



C I T Y N O R T H

4

Aerial photograph of London with City North illustrated.



Aerial photograph of London with City North illustrated.

Change Your Perspective

Each morning will be a fresh opportunity to look out from your home and see the seasons changing against the natural backdrop of Finsbury Park – a truly beautiful and cosmopolitan space that attracts people from all over the capital. The East & West Reservoirs are close by for walks, watersports and open-water swimming.

Catering for all your needs

You will enjoy an impressive sense of arrival when you enter City North. With a spacious, contemporary reception area that is sure to impress your guests, you'll be welcomed home at any time of the day or night thanks to a 24-hour concierge service. There's also a residents' lounge where you can entertain, or simply unwind after a busy and fulfilling day.

C I T Y N O R T H

8

C I T Y N O R T H

9

Computer generated image of the concierge & reception area at City North.

Development Layout



Please note:
Bicycle storage and the refuse & recycling store are located in the basement, accessible directly from The Rectangular Tower.

C I T Y N O R T H

C I T Y N O R T H

Floor 2

Apartment 1			
Kitchen/Living/Dining	8.24m x 5.71m	27'0" x 18'9"	
Bedroom	3.90m x 2.75m	12'10" x 9'0"	
Total Area	52 sq m	560 sq ft	
Total Terrace Area	50 sq m	536 sq ft	

Apartment 2			
Kitchen/Living/Dining	7.35m x 2.86m	24'1" x 9'5"	
Bedroom	5.12m x 2.75m	16'10" x 9'0"	
Total Area	43 sq m	463 sq ft	
Total Terrace Area	18 sq m	198 sq ft	

Apartment 3			
Kitchen/Living/Dining	6.05m x 3.27m	19'10" x 10'9"	
Bedroom	4.28m x 3.22m	14'1" x 10'7"	
Total Area	44 sq m	474 sq ft	
Total Terrace Area	16 sq m	172 sq ft	

Apartment 4			
Kitchen/Living/Dining	8.12m x 4.60m	26'8" x 15'1"	
Bedroom 1	3.46m x 3.35m	11'4" x 11'0"	
Bedroom 2	3.49m x 3.33m	11'5" x 10'11"	
Bedroom 3	3.33m x 3.07m	10'11" x 10'1"	
Bedroom 4	3.46m x 3.46m	11'4" x 11'4"	
Total Area	109 sq m	1,173 sq ft	
Total Terrace 1 Area	55 sq m	592 sq ft	
Total Terrace 2 Area	25 sq m	272 sq ft	

- 1 Bedroom Apartment
- 4 Bedroom Apartment

The dimensions given are accurate to within plus or minus two inches (50mm) from floor level and include wardrobe spaces where applicable. They are not intended to be used for carpet sizes, appliance space or items of furniture. The information is for general guidance only. S=Services.



Floor 3

Apartment 5			
Kitchen/Living/Dining	8.24m x 5.71m	27'0" x 18'9"	
Bedroom	3.90m x 2.75m	12'10" x 9'0"	
Total Area	52 sq m	560 sq ft	

Apartment 6			
Kitchen/Living/Dining	7.35m x 2.86m	24'1" x 9'5"	
Bedroom	5.12m x 2.75m	16'10" x 9'0"	
Total Area	43 sq m	463 sq ft	

Apartment 7			
Kitchen/Living/Dining	6.05m x 3.27m	19'10" x 10'9"	
Bedroom	4.28m x 3.22m	14'1" x 10'7"	
Total Area	44 sq m	474 sq ft	

Apartment 8			
Kitchen/Living/Dining	8.12m x 4.60m	26'8" x 15'1"	
Bedroom 1	3.46m x 3.35m	11'4" x 11'0"	
Bedroom 2	3.49m x 3.33m	11'5" x 10'11"	
Bedroom 3	3.33m x 3.07m	10'11" x 10'1"	
Bedroom 4	3.46m x 3.46m	11'4" x 11'4"	
Total Area	109 sq m	1,173 sq ft	

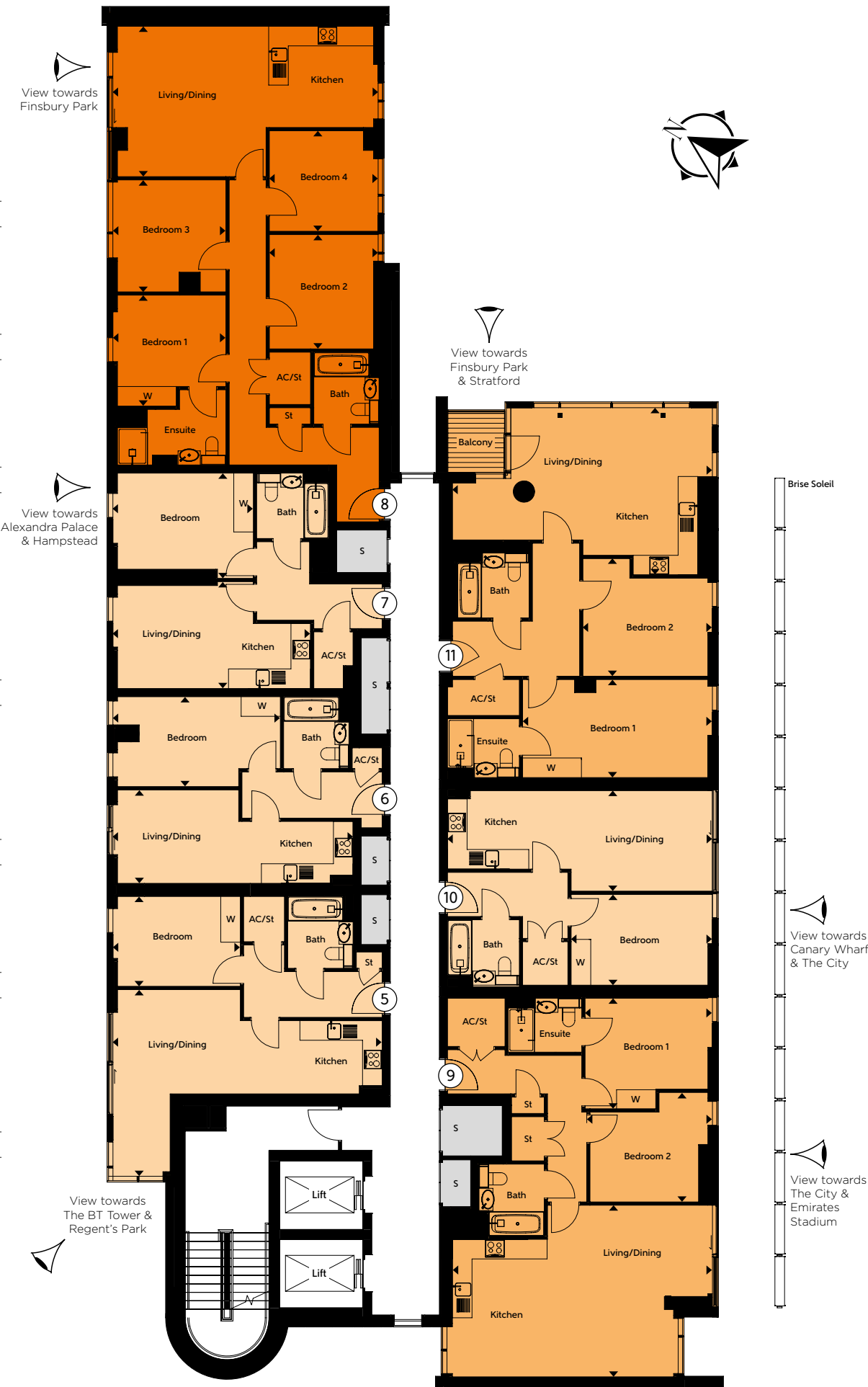
Apartment 9			
Kitchen/Living/Dining	7.96m x 5.25m	26'1" x 17'3"	
Bedroom 1	3.90m x 3.38m	12'10" x 11'1"	
Bedroom 2	3.75m x 3.35m	12'4" x 11'0"	
Total Area	83 sq m	893 sq ft	

Apartment 10			
Kitchen/Living/Dining	8.11m x 3.07m	26'7" x 10'1"	
Bedroom	4.32m x 2.77m	14'2" x 9'1"	
Total Area	48 sq m	517 sq ft	

Apartment 11			
Kitchen/Living/Dining	7.51m x 5.11m	24'8" x 16'9"	
Bedroom 1	5.81 m x 3.00m	19'1" x 9'10"	
Bedroom 2	3.96m x 3.60m	13'0" x 11'10"	
Total Area	84 sq m	904 sq ft	

- 1 Bedroom Apartment
- 2 Bedroom Apartment
- 4 Bedroom Apartment

The dimensions given are accurate to within plus or minus two inches (50mm) from floor level and include wardrobe spaces where applicable. They are not intended to be used for carpet sizes, appliance space or items of furniture. The information is for general guidance only. S=Services.



Floor 4

Suite 12		
Kitchen/Living/Dining	5.05m x 3.89m	16'7" x 12'9"
Bedspace	3.94m x 2.05m	12'11" x 6'9"
Total Area	36 sq m	388 sq ft

Apartment 13		
Kitchen/Living/Dining	5.35m x 5.26m	17'7" x 17'3"
Bedroom	3.79m x 3.25m	12'5" x 10'8"
Total Area	52 sq m	560.0 sq ft

Apartment 14		
Kitchen/Living/Dining	6.15m x 4.56m	20'2" x 15'0"
Bedroom	4.48m x 2.84m	14'8" x 9'4"
Total Area	53 sq m	570 sq ft
Total Terrace Area	70 sq m	757 sq ft

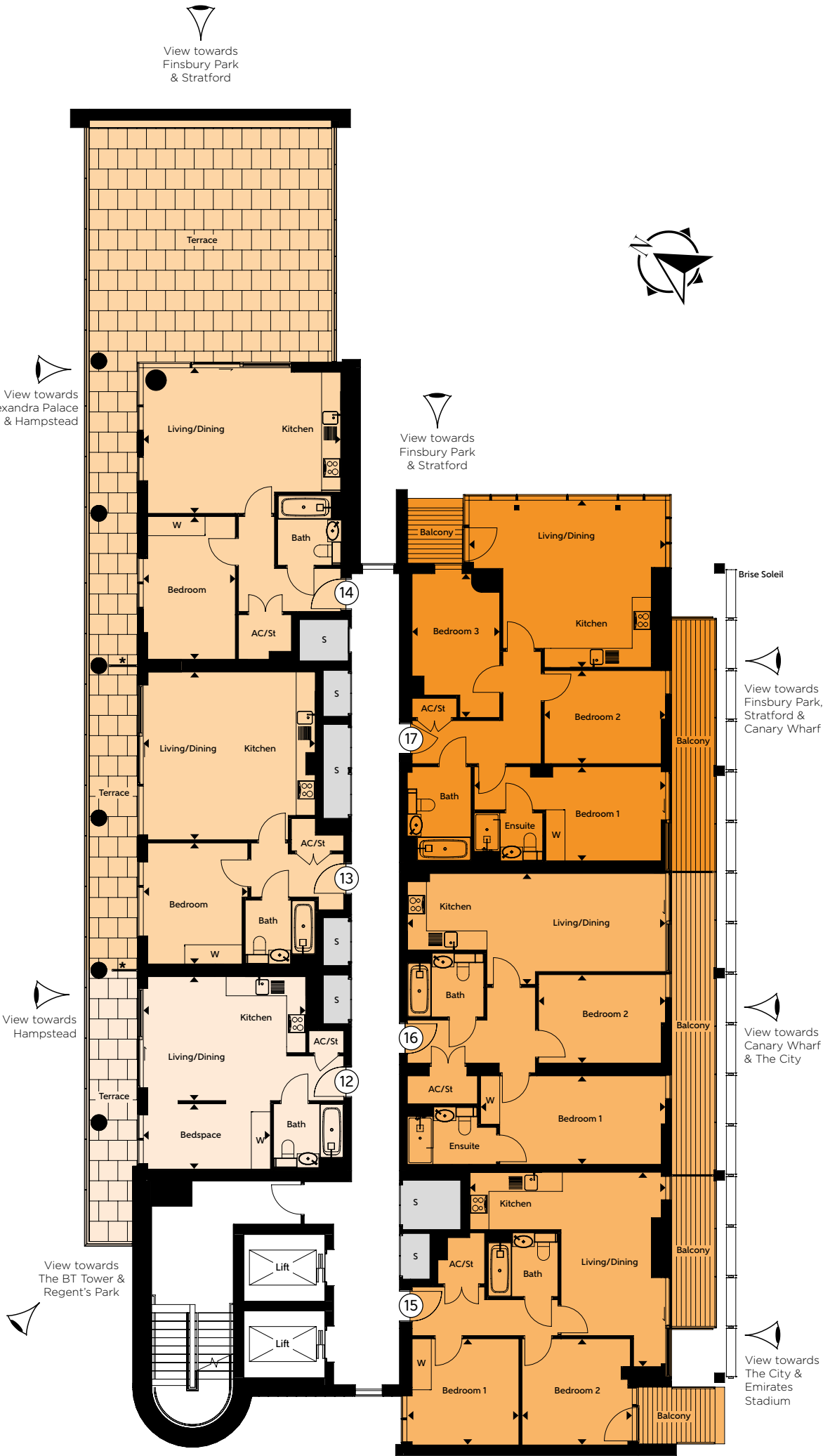
Apartment 15		
Kitchen/Living/Dining	6.15m x 6.10m	20'2" x 20'0"
Bedroom 1	3.51m x 3.33m	11'6" x 10'11"
Bedroom 2	3.46m x 3.33m	11'4" x 10'11"
Total Area	59 sq m	635 sq ft

Apartment 16		
Kitchen/Living/Dining	8.11m x 3.07m	26'7" x 10'1"
Bedroom 1	5.81m x 2.77m	19'1" x 9'1"
Bedroom 2	3.99m x 2.77m	13'1" x 9'1"
Total Area	71 sq m	764 sq ft

Apartment 17		
Kitchen/Living/Dining	6.17m x 5.24m	20'3" x 17'2"
Bedroom 1	6.01m x 2.95m	19'9" x 9'8"
Bedroom 2	4.65m x 2.75m	15'3" x 9'0"
Bedroom 3	3.81m x 2.91m	12'6" x 9'7"
Total Area	84 sq m	904 sq ft

- Suite Apartment
- 1 Bedroom Apartment
- 2 Bedroom Apartment
- 3 Bedroom Apartment

The dimensions given are accurate to within plus or minus two inches (50mm) from floor level and include wardrobe spaces where applicable. They are not intended to be used for carpet sizes, appliance space or items of furniture. The information is for general guidance only. S=Services *1.8m Privacy Screen.



Floor 5

Apartment 18		
Kitchen/Living/Dining	8.24m x 3.19m	27'0" x 10'6"
Bedroom	3.90m x 2.75m	12'10" x 9'0"
Total Area	48 sq m	517 sq ft

Apartment 19		
Kitchen/Living/Dining	7.21m x 3.45m	23'8" x 11'4"
Bedroom 1	5.05m x 2.76m	16'7" x 9'1"
Bedroom 2	3.78m x 2.75m	12'5" x 9'0"
Total Area	69 sq m	743 sq ft

Apartment 20		
Kitchen/Living/Dining	8.12m x 4.80m	26'8" x 15'9"
Bedroom 1	4.22m x 3.57m	13'10" x 11'9"
Bedroom 2	4.75m x 3.37m	15'7" x 11'1"
Total Area	82 sq m	883 sq ft

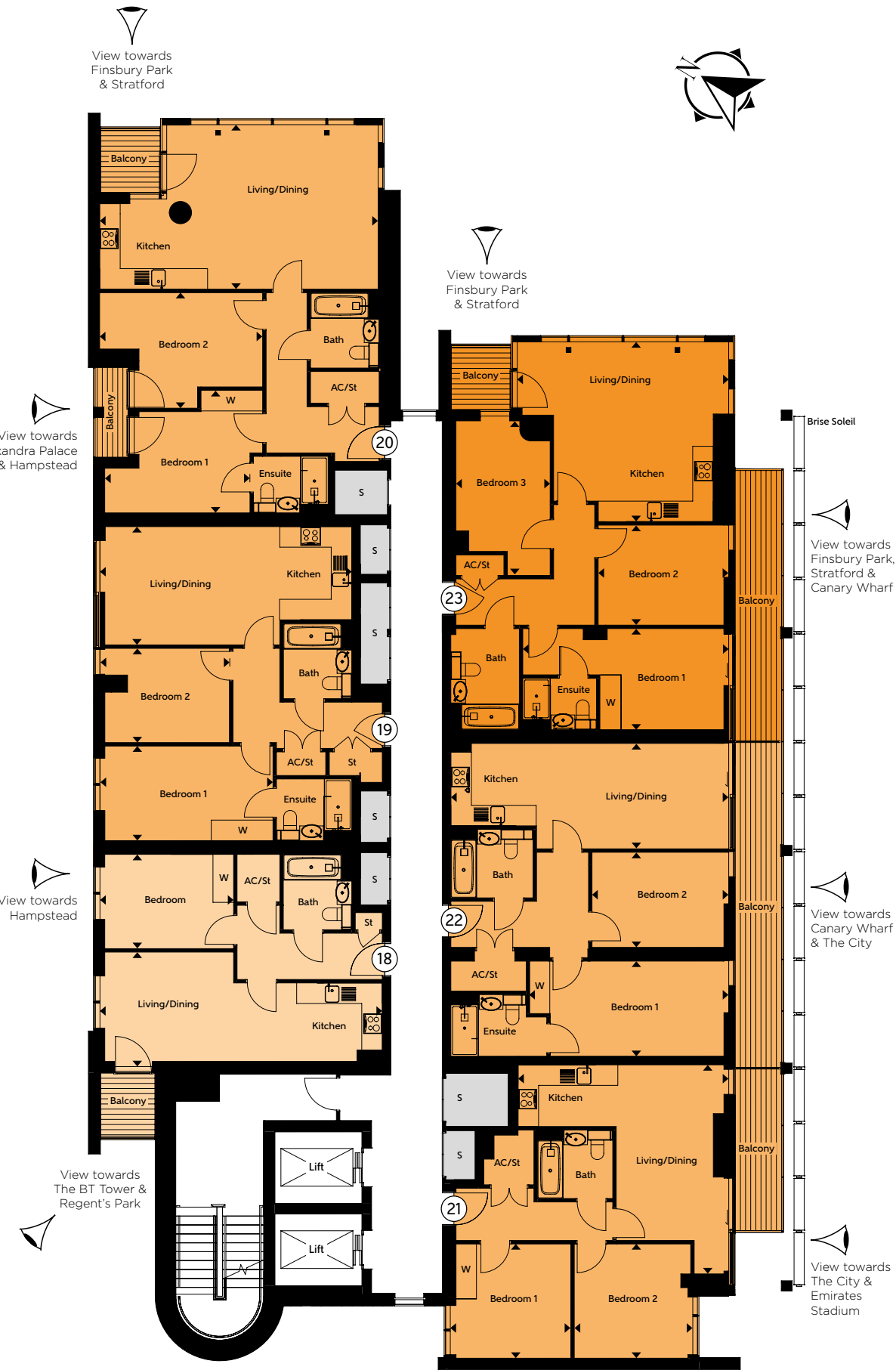
Apartment 21		
Kitchen/Living/Dining	6.15m x 6.10m	20'2" x 20'0"
Bedroom 1	3.51m x 3.33m	11'6" x 10'11"
Bedroom 2	3.46m x 3.33m	11'4" x 10'11"
Total Area	59 sq m	635 sq ft

Apartment 22		
Kitchen/Living/Dining	8.11m x 3.07m	26'7" x 10'1"
Bedroom 1	5.81m x 2.77m	19'1" x 9'1"
Bedroom 2	3.99m x 2.77m	13'1" x 9'1"
Total Area	71 sq m	764 sq ft

Apartment 23		
Kitchen/Living/Dining	6.17m x 5.24m	20'3" x 17'2"
Bedroom 1	6.01m x 2.95m	19'9" x 9'8"
Bedroom 2	4.65m x 2.75m	15'3" x 9'0"
Bedroom 3	3.81m x 2.91m	12'6" x 9'7"
Total Area	84 sq m	904 sq ft

- 1 Bedroom Apartment
- 2 Bedroom Apartment
- 3 Bedroom Apartment

The dimensions given are accurate to within plus or minus two inches (50mm) from floor level and include wardrobe spaces where applicable. They are not intended to be used for carpet sizes, appliance space or items of furniture. The information is for general guidance only. S=Services.



Floor 6

Apartment 24			
Kitchen/Living/Dining	8.24m x 3.19m	27'0" x 10'6"	
Bedroom	3.90m x 2.75m	12'10" x 9'0"	
Total Area	48 sq m	517 sq ft	

Apartment 25			
Kitchen/Living/Dining	7.35m x 3.45m	24'1" x 11'4"	
Bedroom 1	5.05m x 2.76m	16'7" x 9'1"	
Bedroom 2	3.78m x 2.75m	12'5" x 9'0"	
Total Area	69 sq m	743 sq ft	

Apartment 26			
Kitchen/Living/Dining	8.12m x 4.80m	26'8" x 15'9"	
Bedroom 1	4.22m x 3.57m	13'10" x 11'9"	
Bedroom 2	4.75m x 3.37m	15'7" x 11'1"	
Total Area	81 sq m	872 sq ft	

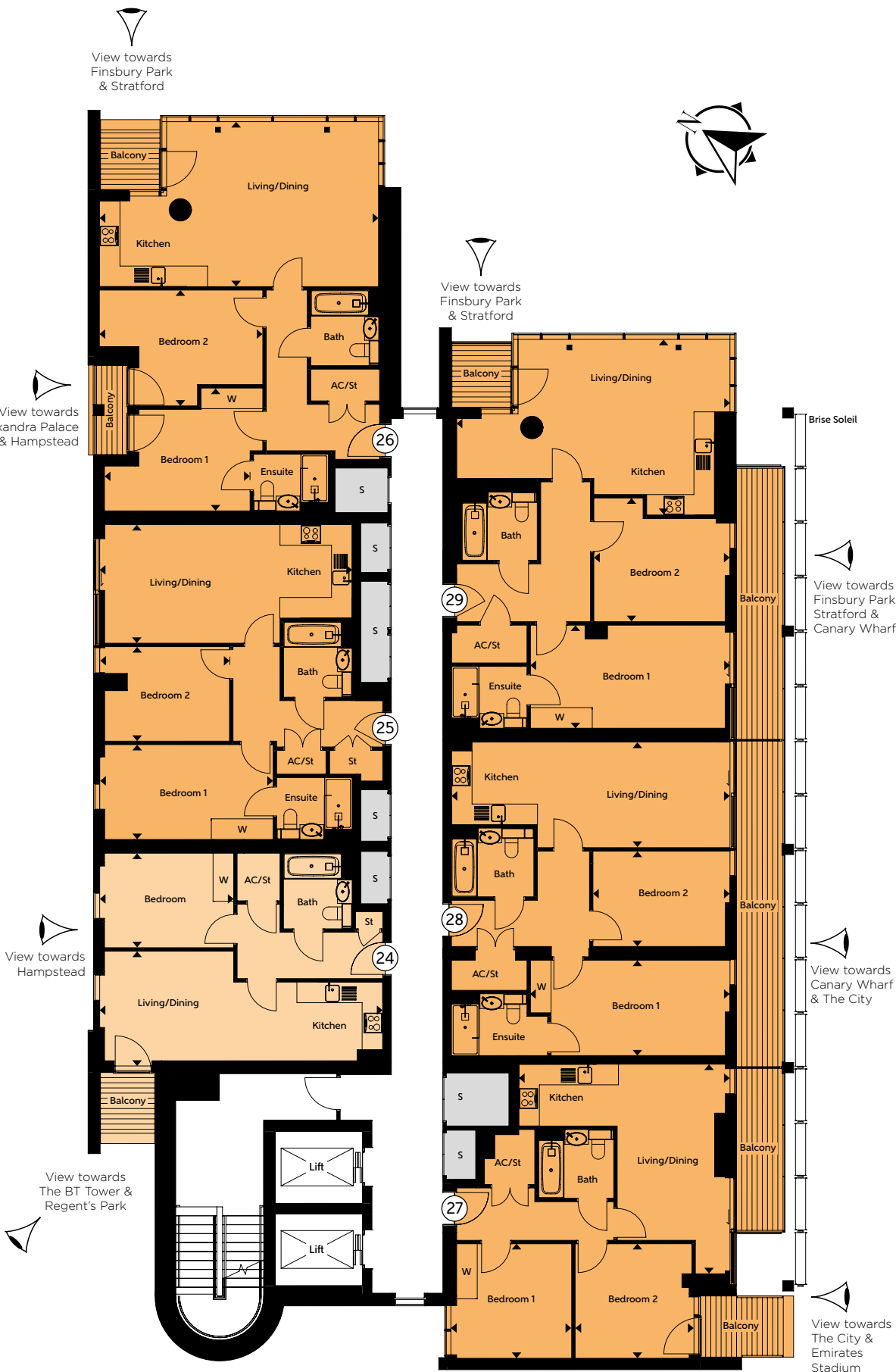
Apartment 27			
Kitchen/Living/Dining	6.15m x 6.10m	20'2" x 20'0"	
Bedroom 1	3.51m x 3.33m	11'6" x 10'11"	
Bedroom 2	3.46m x 3.33m	11'4" x 10'11"	
Total Area	59 sq m	635 sq ft	

Apartment 28			
Kitchen/Living/Dining	8.11m x 3.07m	26'7" x 10'1"	
Bedroom 1	5.81m x 2.77m	19'1" x 9'1"	
Bedroom 2	3.99m x 2.77m	13'1" x 9'1"	
Total Area	71 sq m	764 sq ft	

Apartment 29			
Kitchen/Living/Dining	7.51m x 5.11m	24'8" x 16'9"	
Bedroom 1	5.81m x 3.00m	19'1" x 9'10"	
Bedroom 2	3.96m x 3.60m	13'0" x 11'10"	
Total Area	84 sq m	904 sq ft	

- 1 Bedroom Apartment
- 2 Bedroom Apartment

The dimensions given are accurate to within plus or minus two inches (50mm) from floor level and include wardrobe spaces where applicable. They are not intended to be used for carpet sizes, appliance space or items of furniture. The information is for general guidance only. S=Services.



Floor 7

Apartment 30			
Kitchen/Living/Dining	8.24m x 3.19m	27'0" x 10'6"	
Bedroom	3.90m x 2.75m	12'10" x 9'0"	
Total Area	48 sq m	517 sq ft	

Apartment 31			
Kitchen/Living/Dining	7.35m x 3.45m	24'1" x 11'4"	
Bedroom 1	5.05m x 2.76m	16'7" x 9'1"	
Bedroom 2	3.78m x 2.75m	12'5" x 9'0"	
Total Area	69 sq m	743 sq ft	

Apartment 32			
Kitchen/Living/Dining	8.12m x 4.80m	26'8" x 15'9"	
Bedroom 1	4.22m x 3.57m	13'10" x 11'9"	
Bedroom 2	4.75m x 3.37m	15'7" x 11'1"	
Total Area	81 sq m	872 sq ft	

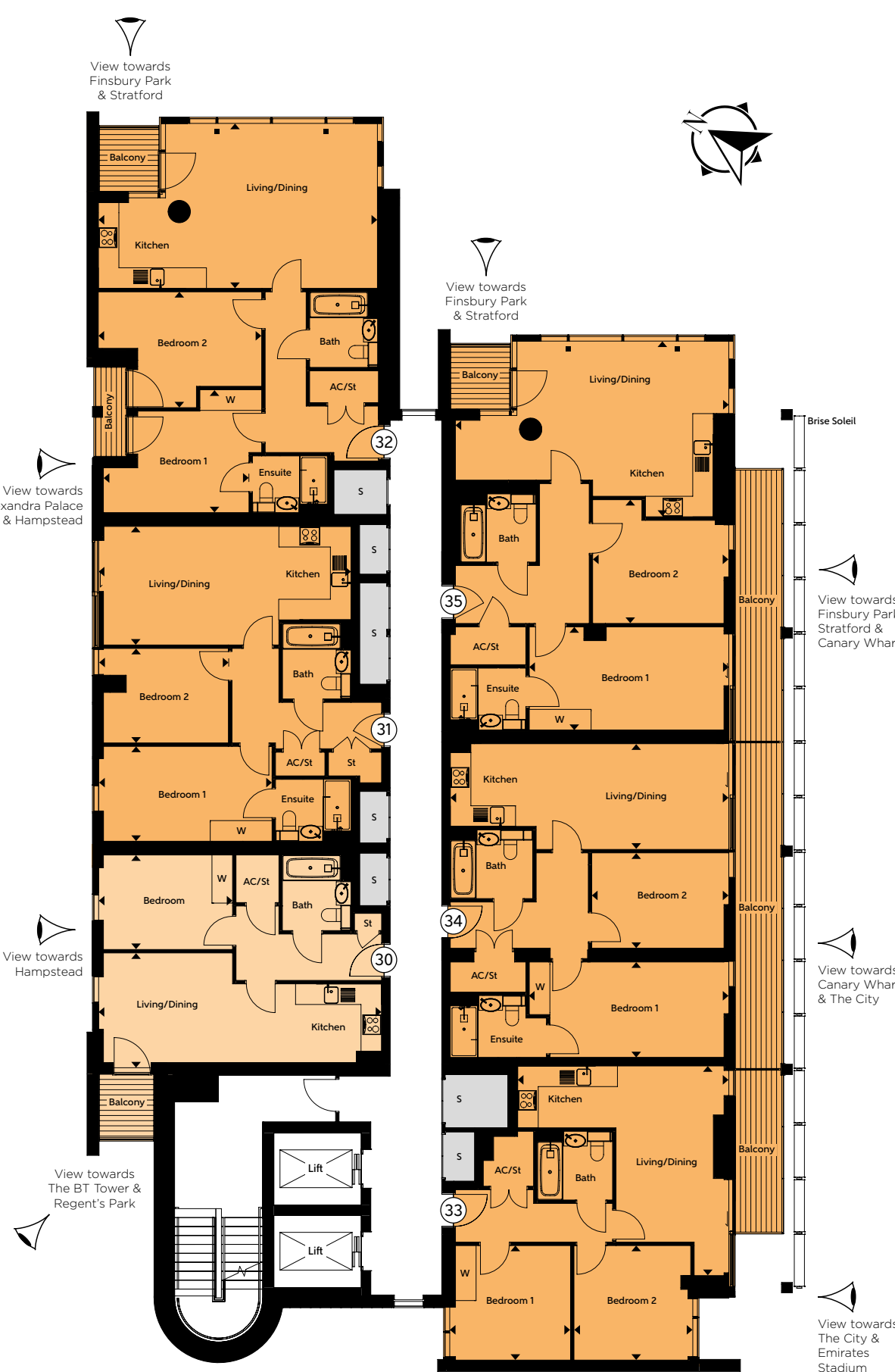
Apartment 33			
Kitchen/Living/Dining	6.15m x 6.10m	20'2" x 20'0"	
Bedroom 1	3.51m x 3.33m	11'6" x 10'11"	
Bedroom 2	3.46m x 3.33m	11'4" x 10'11"	
Total Area	59 sq m	635 sq ft	

Apartment 34			
Kitchen/Living/Dining	8.11m x 3.07m	26'7" x 10'1"	
Bedroom 1	5.81m x 2.77m	19'1" x 9'1"	
Bedroom 2	3.99m x 2.77m	13'1" x 9'1"	
Total Area	71 sq m	764 sq ft	

Apartment 35			
Kitchen/Living/Dining	7.51m x 5.11m	24'8" x 16'9"	
Bedroom 1	5.81m x 3.00m	19'1" x 9'10"	
Bedroom 2	3.96m x 3.60m	13'0" x 11'10"	
Total Area	84 sq m	904 sq ft	

- 1 Bedroom Apartment
- 2 Bedroom Apartment

The dimensions given are accurate to within plus or minus two inches (50mm) from floor level and include wardrobe spaces where applicable. They are not intended to be used for carpet sizes, appliance space or items of furniture. The information is for general guidance only. S=Services.



Floor 8

Apartment 36		
Kitchen/Living/Dining	8.24m x 3.19m	27'0" x 10'6"
Bedroom	3.90m x 2.75m	12'10" x 9'0"
Total Area	48 sq m	517 sq ft

Apartment 37		
Kitchen/Living/Dining	7.35m x 3.45m	24'1" x 11'4"
Bedroom 1	5.05m x 2.76m	16'7" x 9'1"
Bedroom 2	3.78m x 2.75m	12'5" x 9'0"
Total Area	69 sq m	743 sq ft

Apartment 38		
Kitchen/Living/Dining	8.12m x 4.80m	26'8" x 15'9"
Bedroom 1	4.22m x 3.57m	13'10" x 11'9"
Bedroom 2	4.75m x 3.37m	15'7" x 11'1"
Total Area	81 sq m	872 sq ft

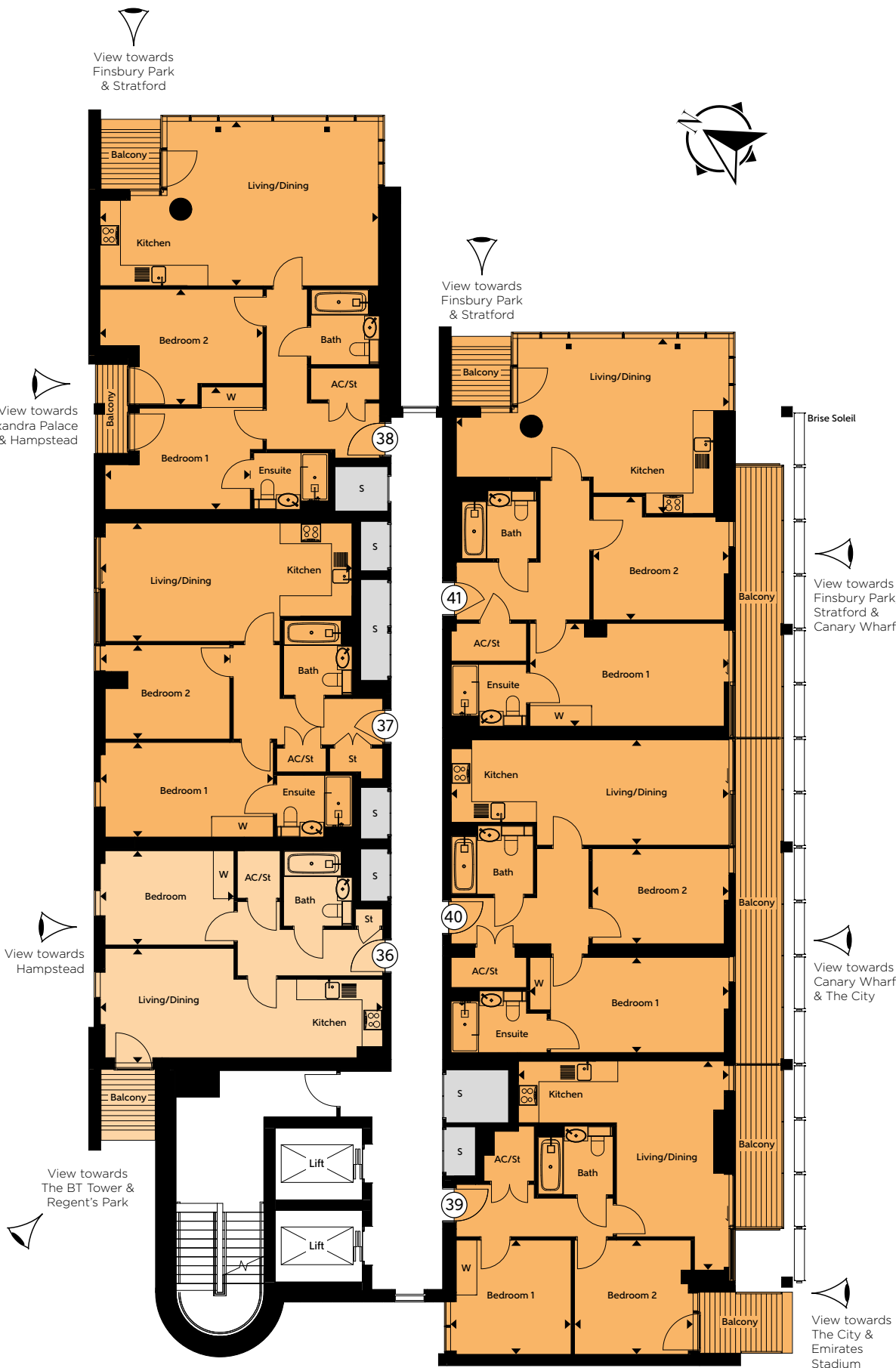
Apartment 39		
Kitchen/Living/Dining	6.15m x 6.10m	20'2" x 20'0"
Bedroom 1	3.51m x 3.33m	11'6" x 10'11"
Bedroom 2	3.46m x 3.33m	11'4" x 10'11"
Total Area	59 sq m	635 sq ft

Apartment 40		
Kitchen/Living/Dining	8.11m x 3.07m	26'7" x 10'1"
Bedroom 1	5.81m x 2.77m	19'1" x 9'1"
Bedroom 2	3.99m x 2.77m	13'1" x 9'1"
Total Area	71 sq m	764 sq ft

Apartment 41		
Kitchen/Living/Dining	7.51m x 5.11m	24'8" x 16'9"
Bedroom 1	5.81m x 3.00m	19'1" x 9'10"
Bedroom 2	3.96m x 3.60m	13'0" x 11'10"
Total Area	84 sq m	904 sq ft

- 1 Bedroom Apartment
- 2 Bedroom Apartment

The dimensions given are accurate to within plus or minus two inches (50mm) from floor level and include wardrobe spaces where applicable. They are not intended to be used for carpet sizes, appliance space or items of furniture. The information is for general guidance only. S=Services.



Floor 9

Apartment 42		
Kitchen/Living/Dining	8.24m x 3.19m	27'0" x 10'6"
Bedroom	3.90m x 2.75m	12'10" x 9'0"
Total Area	48 sq m	517 sq ft

Apartment 43		
Kitchen/Living/Dining	7.35m x 3.45m	24'1" x 11'4"
Bedroom 1	5.05m x 2.76m	16'7" x 9'1"
Bedroom 2	3.78m x 2.75m	12'5" x 9'0"
Total Area	69 sq m	743 sq ft

Apartment 44		
Kitchen/Living/Dining	8.12m x 4.80m	26'8" x 15'9"
Bedroom 1	4.22m x 3.57m	13'10" x 11'9"
Bedroom 2	4.75m x 3.37m	15'7" x 11'1"
Total Area	81 sq m	872 sq ft

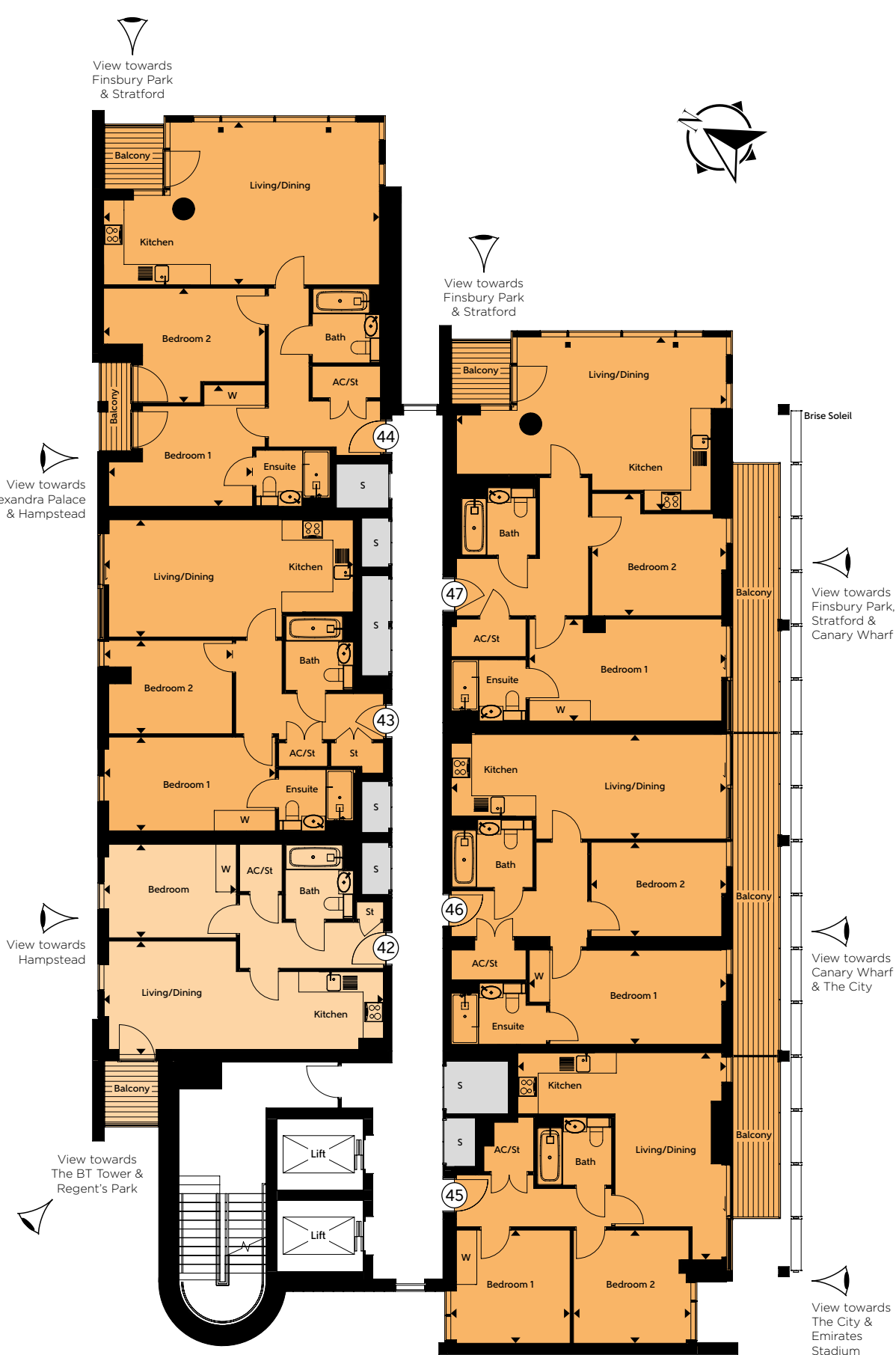
Apartment 45		
Kitchen/Living/Dining	6.15m x 6.10m	20'2" x 20'0"
Bedroom 1	3.51m x 3.33m	11'6" x 10'11"
Bedroom 2	3.46m x 3.33m	11'4" x 10'11"
Total Area	59 sq m	635 sq ft

Apartment 46		
Kitchen/Living/Dining	8.11m x 3.07m	26'7" x 10'1"
Bedroom 1	5.81m x 2.77m	19'1" x 9'1"
Bedroom 2	3.99m x 2.77m	13'1" x 9'1"
Total Area	71 sq m	764 sq ft

Apartment 47		
Kitchen/Living/Dining	7.51m x 5.11m	24'8" x 16'9"
Bedroom 1	5.81m x 3.00m	19'1" x 9'10"
Bedroom 2	3.96m x 3.60m	13'0" x 11'10"
Total Area	84 sq m	904 sq ft

- 1 Bedroom Apartment
- 2 Bedroom Apartment

The dimensions given are accurate to within plus or minus two inches (50mm) from floor level and include wardrobe spaces where applicable. They are not intended to be used for carpet sizes, appliance space or items of furniture. The information is for general guidance only. S=Services.



Floor 10

Suite 48

Kitchen/Living/Dining	5.05m x 3.89m	16'7" x 12'9"
Bedspace	3.94m x 2.05m	12'11" x 6'9"
Total Area	36 sq m	388 sq ft

Apartment 49

Kitchen/Living/Dining	5.35m x 5.26m	17'7" x 17'3"
Bedroom	3.79m x 3.25m	12'5" x 10'8"
Total Area	52 sq m	560 sq ft

Apartment 50

Kitchen/Living/Dining	6.15m x 4.56m	20'2" x 15'0"
Bedroom	4.48m x 2.84m	14'8" x 9'4"
Total Area	53 sq m	570 sq ft

Apartment 51

Kitchen/Living/Dining	7.96m x 5.28m	26'1" x 17'4"
Bedroom 1	4.82m x 3.00m	15'10" x 9'10"
Bedroom 2	4.05m x 3.10m	13'3" x 10'2"
Total Area	83 sq m	893 sq ft

Apartment 52

Kitchen/Living/Dining	8.11m x 3.07m	26'7" x 10'1"
Bedroom	4.32m x 2.77m	14'2" x 9'1"
Total Area	48 sq m	517 sq ft

Apartment 53

Kitchen/Living/Dining	7.51m x 3.52m	24'8" x 11'7"
Bedroom 1	5.81m x 2.92m	19'1" x 9'7"
Bedroom 2	4.56m x 2.83m	15'0" x 9'3"
Total Area	71 sq m	764 sq ft

- Suite Apartment
- 1 Bedroom Apartment
- 2 Bedroom Apartment

The dimensions given are accurate to within plus or minus two inches (50mm) from floor level and include wardrobe spaces where applicable. They are not intended to be used for carpet sizes, appliance space or items of furniture. The information is for general guidance only. S=Services.



Floor 11

Suite 54

Kitchen/Living/Dining	5.05m x 3.89m	16'7" x 12'9"
Bedspace	3.94m x 2.05m	12'11" x 6'9"
Total Area	36 sq m	388 sq m

Apartment 55

Kitchen/Living/Dining	5.35m x 5.26m	17'7" x 17'3"
Bedroom	3.79m x 3.25m	12'5" x 10'8"
Total Area	52 sq m	560 sq ft

Apartment 56

Kitchen/Living/Dining	6.15m x 4.56m	20'2" x 15'0"
Bedroom	4.48m x 2.84m	14'8" x 9'4"
Total Area	53 sq m	570 sq ft

Apartment 57

Kitchen/Living/Dining	7.96m x 5.28m	26'1" x 17'4"
Bedroom 1	4.82m x 3.00m	15'10" x 9'10"
Bedroom 2	4.05m x 3.10m	13'3" x 10'2"
Total Area	83 sq m	893 sq ft

Apartment 58

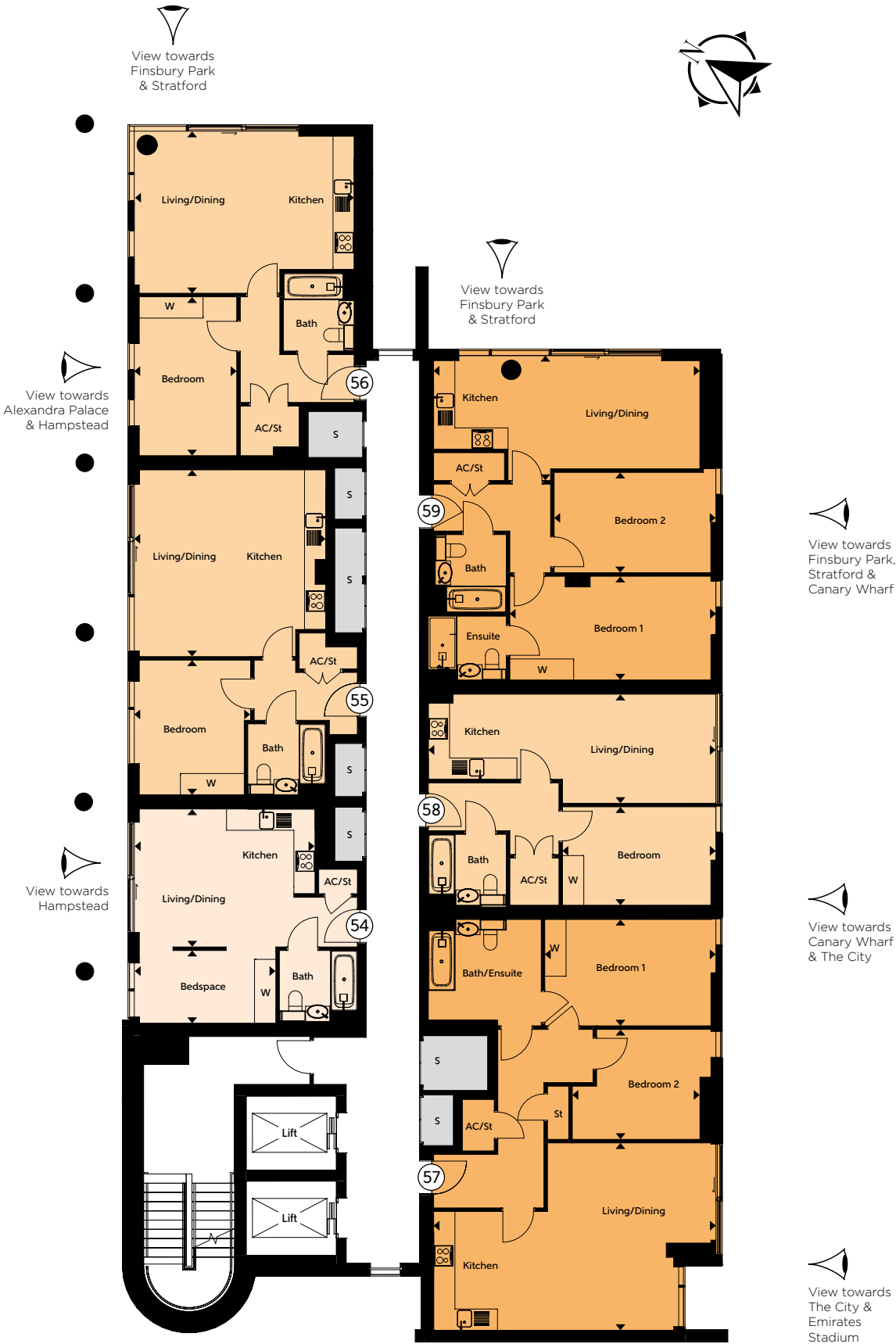
Kitchen/Living/Dining	8.11m x 3.07m	26'7" x 10'1"
Bedroom	4.32m x 2.77m	14'2" x 9'1"
Total Area	48 sq m	517 sq ft

Apartment 59

Kitchen/Living/Dining	7.51m x 3.52m	24'8" x 11'7"
Bedroom 1	5.81m x 2.92m	19'1" x 9'7"
Bedroom 2	4.56m x 2.83m	15'0" x 9'3"
Total Area	71 sq m	764 sq ft

- Suite Apartment
- 1 Bedroom Apartment
- 2 Bedroom Apartment

The dimensions given are accurate to within plus or minus two inches (50mm) from floor level and include wardrobe spaces where applicable. They are not intended to be used for carpet sizes, appliance space or items of furniture. The information is for general guidance only. S=Services.



Floor 12

Apartment 60			
Kitchen/Living/Dining	8.24m x 3.34m	27'0" x 10'11"	
Bedroom	3.90m x 2.75m	12'10" x 9'0"	
Total Area	48 sq m	517 sq ft	

Apartment 61			
Kitchen/Living/Dining	7.35m x 3.45m	24'1" x 11'4"	
Bedroom 1	5.05m x 2.76m	16'7" x 9'1"	
Bedroom 2	3.82m x 2.75m	12'6" x 9'0"	
Total Area	69 sq m	743 sq ft	

Apartment 62			
Kitchen/Living/Dining	8.12m x 4.80m	26'8" x 15'9"	
Bedroom 1	4.38m x 3.57m	14'4" x 11'9"	
Bedroom 2	4.75m x 3.37m	15'7" x 11'1"	
Total Area	82 sq m	883 sq ft	

Apartment 63			
Kitchen/Living/Dining	7.96m x 5.28m	26'1" x 17'4"	
Bedroom 1	4.82m x 3.00m	15'10" x 9'10"	
Bedroom 2	4.05m x 3.10m	13'3" x 10'2"	
Total Area	83 sq m	893 sq ft	

Apartment 64			
Kitchen/Living/Dining	8.11m x 3.07m	26'7" x 10'1"	
Bedroom	4.32m x 2.77m	14'2" x 9'1"	
Total Area	48 sq m	517 sq ft	

Apartment 65			
Kitchen/Living/Dining	7.51m x 5.11m	24'8" x 16'9"	
Bedroom 1	5.81m x 3.00m	19'1" x 9'10"	
Bedroom 2	3.96m x 3.60m	13'0" x 11'10"	
Total Area	84 sq m	904 sq ft	

- 1 Bedroom Apartment
- 2 Bedroom Apartment

The dimensions given are accurate to within plus or minus two inches (50mm) from floor level and include wardrobe spaces where applicable. They are not intended to be used for carpet sizes, appliance space or items of furniture. The information is for general guidance only. S=Services.



Floor 13

Apartment 66			
Kitchen/Living/Dining	8.24m x 3.34m	27'0" x 10'11"	
Bedroom	3.90m x 2.75m	12'10" x 9'0"	
Total Area	48 sq m	517 sq ft	

Apartment 67			
Kitchen/Living/Dining	7.35m x 3.45m	24'1" x 11'4"	
Bedroom 1	5.05m x 2.76m	16'7" x 9'1"	
Bedroom 2	3.78m x 2.75m	12'5" x 9'0"	
Total Area	69 sq m	743 sq ft	

Apartment 68			
Kitchen/Living/Dining	8.12m x 4.80m	26'8" x 15'9"	
Bedroom 1	4.38m x 3.57m	14'4" x 11'9"	
Bedroom 2	4.75m x 3.37m	15'7" x 11'1"	
Total Area	82 sq m	883 sq ft	

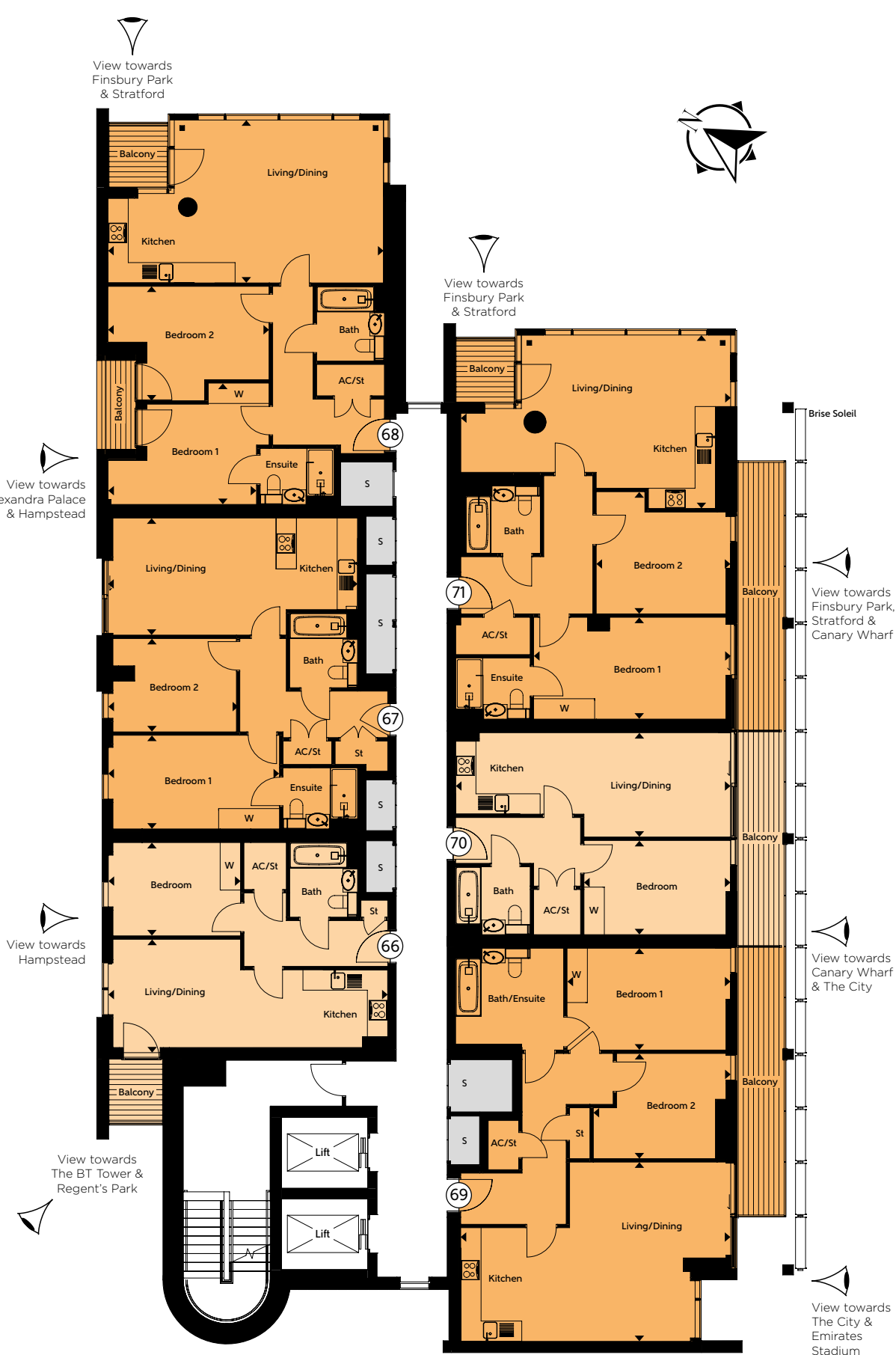
Apartment 69			
Kitchen/Living/Dining	7.96m x 5.28m	26'1" x 17'4"	
Bedroom 1	4.82m x 3.00m	15'10" x 9'10"	
Bedroom 2	4.05m x 3.10m	13'3" x 10'2"	
Total Area	83 sq m	893 sq ft	

Apartment 70			
Kitchen/Living/Dining	8.11m x 3.07m	26'7" x 10'1"	
Bedroom	4.32m x 2.77m	14'2" x 9'1"	
Total Area	48 sq m	517 sq ft	

Apartment 71			
Kitchen/Living/Dining	7.51m x 5.11m	24'8" x 16'9"	
Bedroom 1	5.81m x 3.00m	19'1" x 9'10"	
Bedroom 2	3.96m x 3.60m	13'0" x 11'10"	
Total Area	84 sq m	904 sq ft	

- 1 Bedroom Apartment
- 2 Bedroom Apartment

The dimensions given are accurate to within plus or minus two inches (50mm) from floor level and include wardrobe spaces where applicable. They are not intended to be used for carpet sizes, appliance space or items of furniture. The information is for general guidance only. S=Services.



Floor 14

Apartment 72			
Kitchen/Living/Dining	8.24m x 3.34m	27'0" x 10'11"	
Bedroom	3.90m x 2.75m	12'10" x 9'0"	
Total Area	48 sq m	517 sq ft	

Apartment 73			
Kitchen/Living/Dining	7.35m x 3.45m	24'1" x 11'4"	
Bedroom 1	5.05m x 2.76m	16'7" x 9'1"	
Bedroom 2	3.82m x 2.75m	12'6" x 9'0"	
Total Area	69 sq m	743 sq ft	

Apartment 74			
Kitchen/Living/Dining	8.12m x 4.80m	26'8" x 15'9"	
Bedroom 1	4.38m x 3.57m	14'4" x 11'9"	
Bedroom 2	4.75m x 3.37m	15'7" x 11'1"	
Total Area	82 sq m	883 sq ft	

Apartment 75			
Kitchen/Living/Dining	7.96m x 5.28m	26'1" x 17'4"	
Bedroom 1	4.82m x 3.00m	15'10" x 9'10"	
Bedroom 2	4.05m x 3.10m	13'3" x 10'2"	
Total Area	83 sq m	893 sq ft	

Apartment 76			
Kitchen/Living/Dining	8.11m x 3.07m	26'7" x 10'1"	
Bedroom	4.32m x 2.77m	14'2" x 9'1"	
Total Area	48 sq m	517 sq ft	

Apartment 77			
Kitchen/Living/Dining	7.51m x 5.24m	24'8" x 17'2"	
Bedroom 1	5.81m x 3.00m	19'1" x 9'10"	
Bedroom 2	4.46m x 2.86m	14'8" x 9'5"	
Total Area	84 sq m	904 sq ft	

- 1 Bedroom Apartment
- 2 Bedroom Apartment

The dimensions given are accurate to within plus or minus two inches (50mm) from floor level and include wardrobe spaces where applicable. They are not intended to be used for carpet sizes, appliance space or items of furniture. The information is for general guidance only. S=Services.



Floor 15

Apartment 78			
Kitchen/Living/Dining	8.24m x 3.34m	27'0" x 10'11"	
Bedroom	3.90m x 2.75m	12'10" x 9'0"	
Total Area	48 sq m	517 sq ft	

Apartment 79			
Kitchen/Living/Dining	7.35m x 3.45m	24'1" x 11'4"	
Bedroom 1	5.05m x 2.76m	16'7" x 9'1"	
Bedroom 2	3.78m x 2.75m	12'5" x 9'0"	
Total Area	69 sq m	743 sq ft	

Apartment 80			
Kitchen/Living/Dining	8.12m x 4.80m	26'8" x 15'9"	
Bedroom 1	4.38m x 3.57m	14'4" x 11'9"	
Bedroom 2	4.75m x 3.37m	15'7" x 11'1"	
Total Area	82 sq m	883 sq ft	

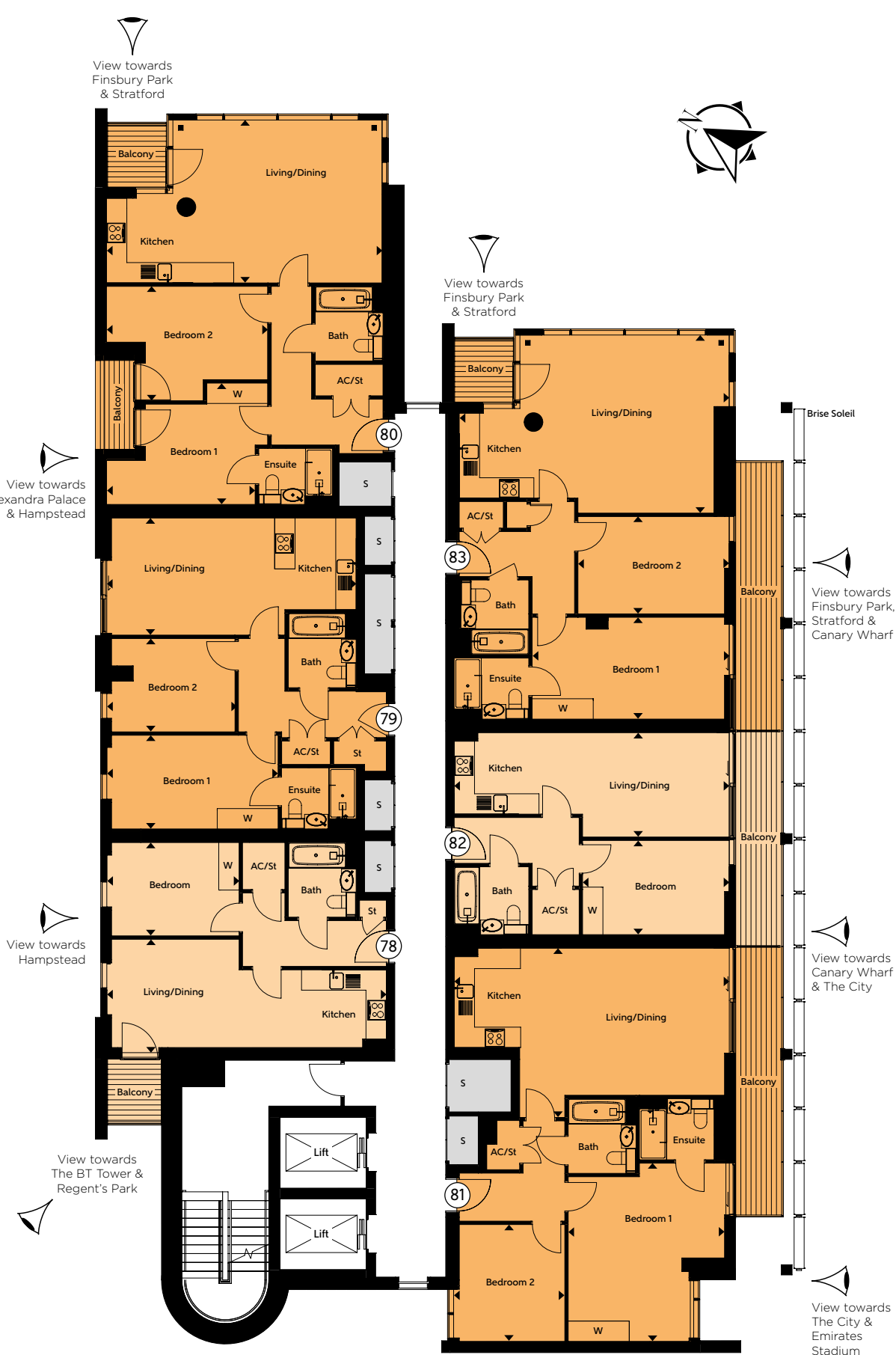
Apartment 81			
Kitchen/Living/Dining	8.11m x 4.33m	26'7" x 14'2"	
Bedroom 1	4.82m x 3.00m	15'10" x 9'10"	
Bedroom 2	3.60m x 3.10m	11'10" x 10'2"	
Total Area	83 sq m	893 sq ft	

Apartment 82			
Kitchen/Living/Dining	8.11m x 3.07m	26'7" x 10'1"	
Bedroom	4.32m x 2.77m	14'2" x 9'1"	
Total Area	48 sq m	517 sq ft	

Apartment 83			
Kitchen/Living/Dining	7.51m x 5.24m	24'8" x 17'2"	
Bedroom 1	5.81m x 3.00m	19'1" x 9'10"	
Bedroom 2	4.46m x 2.86m	14'8" x 9'5"	
Total Area	84 sq m	904 sq ft	

- 1 Bedroom Apartment
- 2 Bedroom Apartment

The dimensions given are accurate to within plus or minus two inches (50mm) from floor level and include wardrobe spaces where applicable. They are not intended to be used for carpet sizes, appliance space or items of furniture. The information is for general guidance only. S=Services.



Floor 16

Apartment 84			
Kitchen/Living/Dining	8.24m x 3.34m	27'0" x 10'11"	
Bedroom	3.90m x 2.75m	12'10" x 9'0"	
Total Area	48 sq m	517 sq ft	

Apartment 85			
Kitchen/Living/Dining	7.35m x 3.45m	24'1" x 11'4"	
Bedroom 1	5.05m x 2.76m	16'7" x 9'1"	
Bedroom 2	3.78m x 2.75m	12'5" x 9'0"	
Total Area	69 sq m	743 sq ft	

Apartment 86			
Kitchen/Living/Dining	8.12m x 4.80m	26'8" x 15'9"	
Bedroom 1	4.38m x 3.57m	14'4" x 11'9"	
Bedroom 2	4.75m x 3.37m	15'7" x 11'1"	
Total Area	82 sq m	883 sq ft	

Apartment 87			
Kitchen/Living/Dining	8.11m x 4.33m	26'7" x 14'2"	
Bedroom 1	4.82m x 3.00m	15'10" x 9'10"	
Bedroom 2	3.60m x 3.10m	11'10" x 10'2"	
Total Area	83 sq m	893 sq ft	

Apartment 88			
Kitchen/Living/Dining	8.11m x 3.07m	26'7" x 10'1"	
Bedroom	4.32m x 2.77m	14'2" x 9'1"	
Total Area	48 sq m	517 sq ft	

Apartment 89			
Kitchen/Living/Dining	7.51m x 5.24m	24'8" x 17'2"	
Bedroom 1	5.81m x 3.00m	19'1" x 9'10"	
Bedroom 2	4.46m x 2.86m	14'8" x 9'5"	
Total Area	84 sq m	904 sq ft	

- 1 Bedroom Apartment
- 2 Bedroom Apartment

The dimensions given are accurate to within plus or minus two inches (50mm) from floor level and include wardrobe spaces where applicable. They are not intended to be used for carpet sizes, appliance space or items of furniture. The information is for general guidance only. S=Services.



Floor 17

Apartment 90			
Kitchen/Living/Dining	8.24m x 3.34m	27'0" x 10'11"	
Bedroom	3.90m x 2.75m	12'10" x 9'0"	
Total Area	48 sq m	517 sq ft	

Apartment 91			
Kitchen/Living/Dining	7.35m x 3.45m	24'1" x 11'4"	
Bedroom 1	5.05m x 2.76m	16'7" x 9'1"	
Bedroom 2	3.78m x 2.75m	12'5" x 9'0"	
Total Area	69 sq m	743 sq ft	

Apartment 92			
Kitchen/Living/Dining	8.12m x 4.80m	26'8" x 15'9"	
Bedroom 1	4.38m x 3.57m	14'4" x 11'9"	
Bedroom 2	4.75m x 3.37m	15'7" x 11'1"	
Total Area	82 sq m	883 sq ft	

Apartment 93			
Kitchen/Living/Dining	8.11m x 4.33m	26'7" x 14'2"	
Bedroom 1	4.82m x 3.00m	15'10" x 9'10"	
Bedroom 2	3.60m x 3.10m	11'10" x 10'2"	
Total Area	83 sq m	893 sq ft	

Apartment 94			
Kitchen/Living/Dining	8.11m x 3.07m	26'7" x 10'1"	
Bedroom	4.32m x 2.77m	14'2" x 9'1"	
Total Area	48 sq m	517 sq ft	

Apartment 95			
Kitchen/Living/Dining	7.51m x 5.24m	24'8" x 17'2"	
Bedroom 1	5.81m x 3.00m	19'1" x 9'10"	
Bedroom 2	4.46m x 2.86m	14'8" x 9'5"	
Total Area	84 sq m	904 sq ft	

- 1 Bedroom Apartment
- 2 Bedroom Apartment

The dimensions given are accurate to within plus or minus two inches (50mm) from floor level and include wardrobe spaces where applicable. They are not intended to be used for carpet sizes, appliance space or items of furniture. The information is for general guidance only. S=Services.



Floor 18

Apartment 96			
Kitchen/Living/Dining	8.24m x 3.34m	27'0" x 10'11"	
Bedroom	3.90m x 2.75m	12'10" x 9'0"	
Total Area	48 sq m	517 sq ft	

Apartment 97			
Kitchen/Living/Dining	7.35m x 3.45m	24'1" x 11'4"	
Bedroom 1	5.05m x 2.76m	16'7" x 9'1"	
Bedroom 2	3.82m x 2.75m	12'6" x 9'0"	
Total Area	69 sq m	743 sq ft	

Apartment 98			
Kitchen/Living/Dining	8.12m x 4.80m	26'8" x 15'9"	
Bedroom 1	4.38m x 3.57m	14'4" x 11'9"	
Bedroom 2	4.75m x 3.37m	15'7" x 11'1"	
Total Area	82 sq m	883 sq ft	

Apartment 99			
Kitchen/Living/Dining	8.11m x 4.33m	26'7" x 14'2"	
Bedroom 1	4.82m x 3.00m	15'10" x 9'10"	
Bedroom 2	3.60m x 3.10m	11'10" x 10'2"	
Total Area	83 sq m	893 sq ft	

Apartment 100			
Kitchen/Living/Dining	8.11m x 3.07m	26'7" x 10'1"	
Bedroom	4.32m x 2.77m	14'2" x 9'1"	
Total Area	48 sq m	517 sq ft	

Apartment 101			
Kitchen/Living/Dining	7.51m x 5.24m	24'8" x 17'2"	
Bedroom 1	5.81m x 3.00m	19'1" x 9'10"	
Bedroom 2	4.46m x 2.86m	14'8" x 9'5"	
Total Area	84 sq m	904 sq ft	

- 1 Bedroom Apartment
- 2 Bedroom Apartment

The dimensions given are accurate to within plus or minus two inches (50mm) from floor level and include wardrobe spaces where applicable. They are not intended to be used for carpet sizes, appliance space or items of furniture. The information is for general guidance only. S=Services.



Floor 19

Apartment 102			
Kitchen/Living/Dining	8.24m x 3.34m	27'0" x 10'11"	
Bedroom	3.90m x 2.75m	12'10" x 9'0"	
Total Area	48 sq m	517 sq ft	

Apartment 103			
Kitchen/Living/Dining	7.35m x 3.45m	24'1" x 11'4"	
Bedroom 1	5.05m x 2.76m	16'7" x 9'1"	
Bedroom 2	3.78m x 2.75m	12'5" x 9'0"	
Total Area	69 sq m	743 sq ft	

Apartment 104			
Kitchen/Living/Dining	8.12m x 4.80m	26'8" x 15'9"	
Bedroom 1	4.38m x 3.57m	14'4" x 11'9"	
Bedroom 2	4.75m x 3.37m	15'7" x 11'1"	
Total Area	82 sq m	883 sq ft	

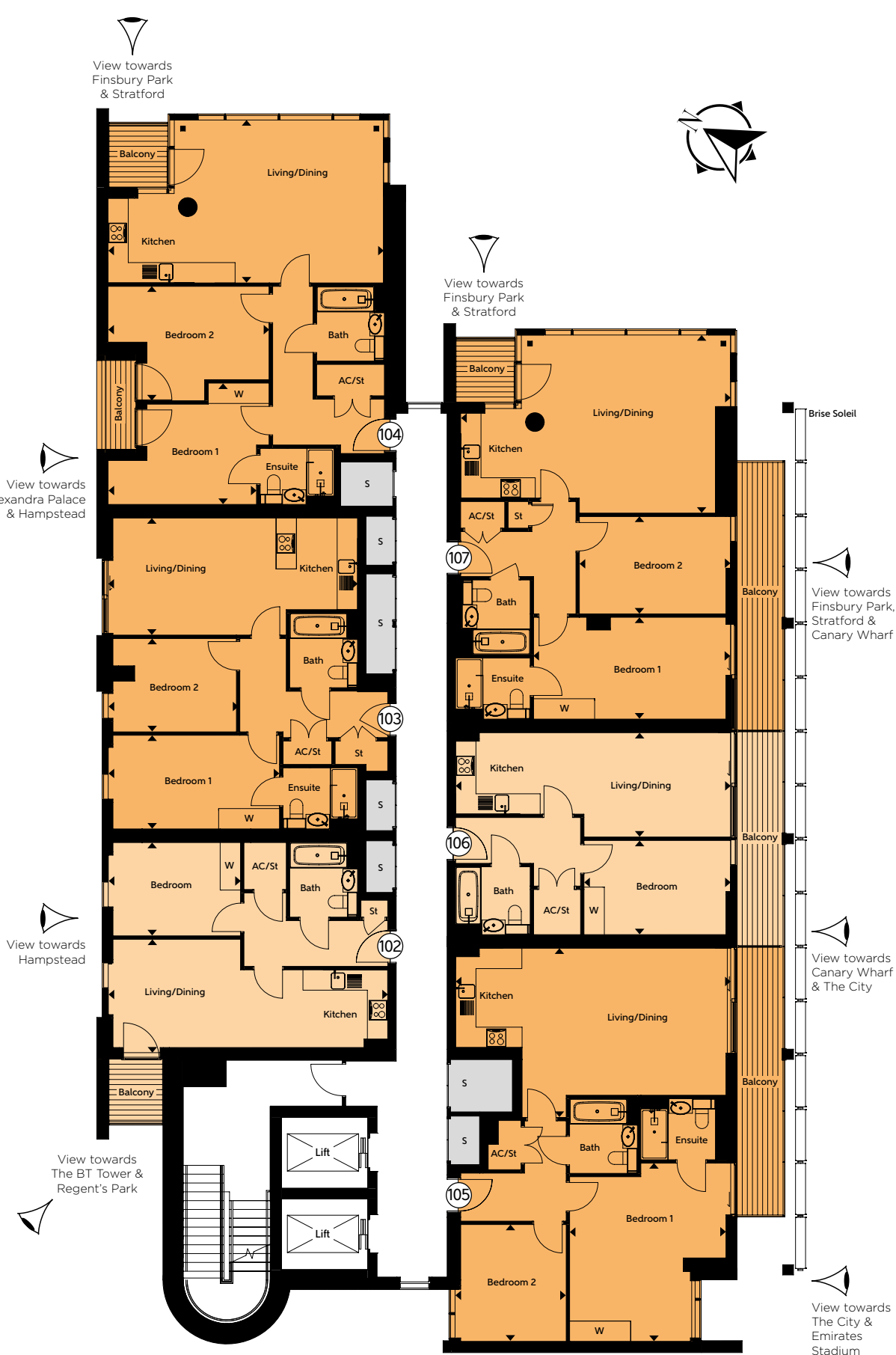
Apartment 105			
Kitchen/Living/Dining	8.11m x 4.33m	26'7" x 14'2"	
Bedroom 1	4.82m x 3.00m	15'10" x 9'10"	
Bedroom 2	3.60m x 3.10m	11'10" x 10'2"	
Total Area	83 sq m	893 sq ft	

Apartment 106			
Kitchen/Living/Dining	8.11m x 3.07m	26'7" x 10'1"	
Bedroom 1	4.32m x 2.77m	14'2" x 9'1"	
Total Area	48 sq m	517 sq ft	

Apartment 107			
Kitchen/Living/Dining	7.51m x 5.24m	24'8" x 17'2"	
Bedroom 1	5.81m x 3.00m	19'1" x 9'10"	
Bedroom 2	4.46m x 2.86m	14'8" x 9'5"	
Total Area	84 sq m	904 sq ft	

- 1 Bedroom Apartment
- 2 Bedroom Apartment

The dimensions given are accurate to within plus or minus two inches (50mm) from floor level and include wardrobe spaces where applicable. They are not intended to be used for carpet sizes, appliance space or items of furniture. The information is for general guidance only. S=Services.



Floor 20

Apartment 108

Kitchen/Living/Dining	5.42m x 5.00m	17'9" x 16'5"
Bedroom	4.01m x 3.45m	13'2" x 11'4"
Total Area	49 sq m	527 sq ft

Apartment 109

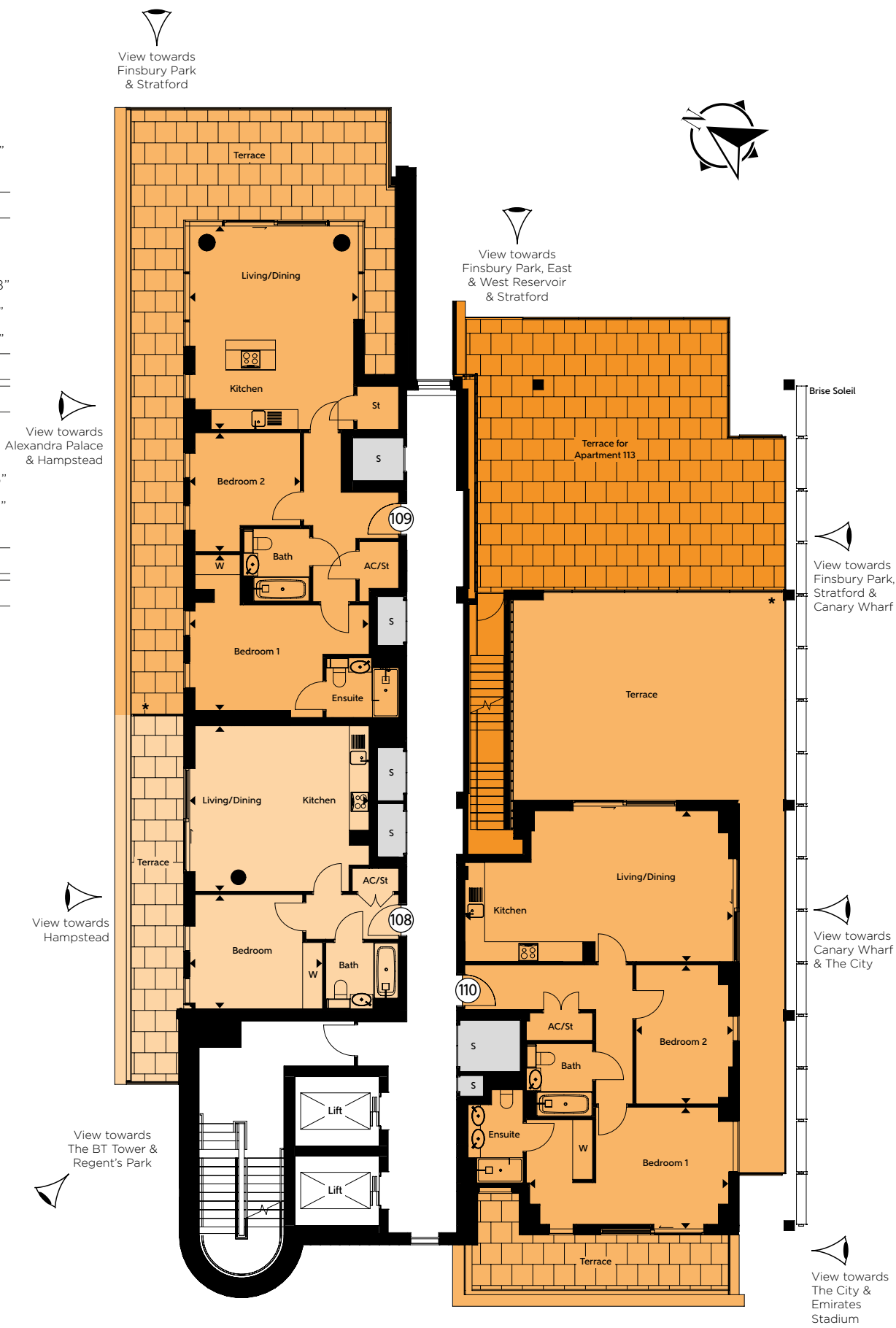
Kitchen/Living/Dining	6.14m x 5.09m	20'2" x 16'8"
Bedroom 1	5.42m x 4.69m	17'9" x 15'5"
Bedroom 2	3.58m x 3.34m	11'9" x 10'11"
Total Area	80 sq m	861 sq ft
Total Terrace Area	56 sq m	603 sq ft

Apartment 110

Kitchen/Living/Dining	8.11m x 4.69m	26'7" x 15'5"
Bedroom 1	6.01m x 3.67m	19'9" x 12'0"
Bedroom 2	4.20m x 2.93m	13'9" x 9'7"
Total Area	88 sq m	947 sq ft
Total Terrace Area	82 sq m	883 sq ft

- 1 Bedroom Apartment
- 2 Bedroom Apartment
- 3 Bedroom Apartment

The dimensions given are accurate to within plus or minus two inches (50mm) from floor level and include wardrobe spaces where applicable. They are not intended to be used for carpet sizes, appliance space or items of furniture. The information is for general guidance only. S=Services *1.8m Privacy Screen.



Computer generated image of The Rectangular Tower at City North.

Floor 21

Duplex Penthouses

Premium Specification

Lower Level

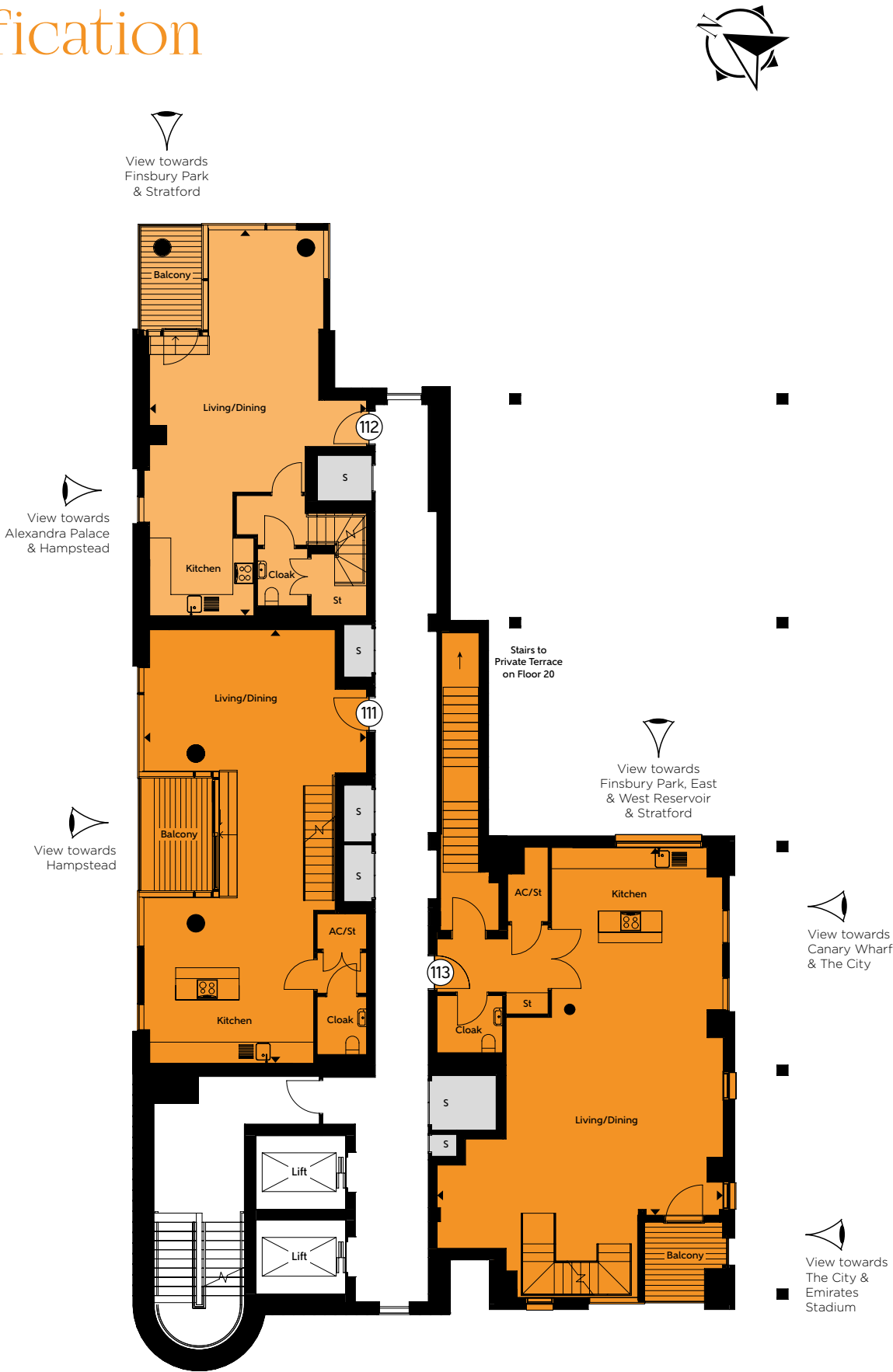
Apartment 111		
Kitchen/Living/Dining	12.30m x 6.31m	40'4" x 20'8"
Bedroom 1	6.31m x 4.06m	20'8" x 13'4"
Bedroom 2	3.91m x 3.12m	12'10" x 10'3"
Bedroom 3	4.12m x 4.01m	13'6" x 13'2"
Total	138 sq m	1485 sq ft

Apartment 112		
Kitchen/Living/Dining	10.94m x 6.15m	35'11" x 20'2"
Bedroom 1	5.09m x 4.71m	16'8" x 15'5"
Bedroom 2	3.80m x 3.14m	12'6" x 10'4"
Total	114 sq m	1227 sq ft

Apartment 113		
Kitchen/Living/Dining	10.43m x 8.10m	34'3" x 26'7"
Bedroom 1	6.01m x 3.64m	19'9" x 11'11"
Bedroom 2	4.41m x 3.57m	14'6" x 11'9"
Bedroom 3	4.41m x 3.04m	14'6" x 10'0"
Total Area	185 sq m	1991 sq ft
Total Terrace Area (Floor 20)	73 sq m	781 sq ft

- 2 Bedroom Apartment
- 3 Bedroom Apartment

The dimensions given are accurate to within plus or minus two inches (50mm) from floor level and include wardrobe spaces where applicable. They are not intended to be used for carpet sizes, appliance space or items of furniture. The information is for general guidance only. S=Services

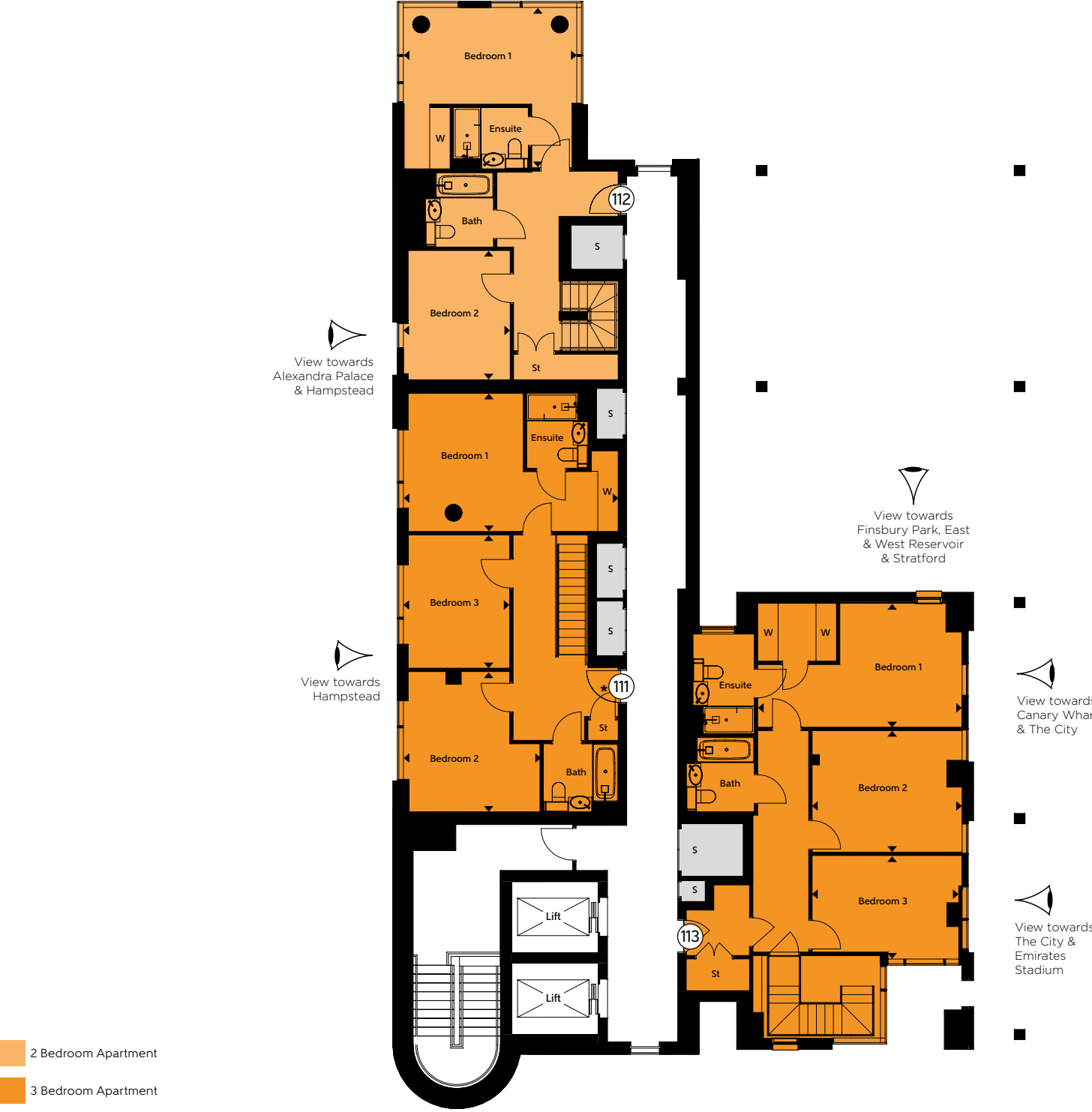


Floor 22

Duplex Penthouses

Premium Specification

Upper Level



The dimensions given are accurate to within plus or minus two inches (50mm) from floor level and include wardrobe spaces where applicable. They are not intended to be used for carpet sizes, appliance space or items of furniture. The information is for general guidance only. S=Services *=Means of escape only.

Setting the Mood



CITY NORTH



Photograph indicates the bathroom style at City North and computer generated images of City North interiors.

Specification



GENERAL FEATURES

- 24-hour concierge service
- Under-floor heating
- Basement bicycle storage
- The Pavilion landscaped roof garden
- Private residents' roof terrace on 10th floor of The Linear Building
- Private residents' Wi-Fi Lounge

KITCHENS

- High-gloss white, handle-less fitted units from London designer Urban Myth
- Stone worktops
- Fully integrated Bosch appliances: stainless steel oven, induction hob, extractor hood, dishwasher, fridge/freezer, microwave & washer/dryer
- Suites & one bedroom apartments feature an oven/microwave combination
- Full height glass splash-backs
- Feature lighting under wall units

BATH & ENSUITE SHOWER ROOMS

- Pure white Villeroy & Boch bathroom suites with chrome taps and mixers
- Bath with thermostatic shower mixer and glazed screen (where applicable)
- Large shower enclosure to ensuite/shower rooms
- Contemporary porcelain & ceramic tiling
- Large vanity mirror
- Towel warmer
- Bespoke cabinetry with built in storage & low voltage socket

FLOORING

- Kitchen, living room & hallway in engineered timber flooring
- Bedrooms carpeted in a warm, neutral colour tone

DÉCOR

- Smooth finish to all walls & ceilings, painted in white emulsion
- White satinwood finish to doors & woodwork

FIXTURES & FITTINGS

- Full height entrance & internal doors
- Fitted wardrobe to main bedroom
- Satin chrome door handles
- Recessed downlights to kitchen, living room & bathrooms
- Sky+, TV and telephone outlets to living room, with TV outlets to all bedrooms

SECURITY & WARRANTIES

- Video entryphone system to all apartments
- Monitored CCTV system
- 10 year 'Premier Guarantee' warranty
- Two year 24/7 emergency cover
- Comprehensive induction with dedicated Customer Service Manager

PREMIUM SPECIFICATION APARTMENTS

- Fully integrated Siemens appliances: stainless steel oven, five-zone induction hob, extractor hood, dishwasher, fridge/freezer, microwave & washer/dryer
- Combined comfort cooling & warm air system with underfloor heating

Specification details are correct at time of going to print but are for guidance only and remain subject to change. Exact fittings and finishes are subject to availability at time of installation.

99.5

P E R C E N T
OF CUSTOMERS
SURVEYED WOULD
RECOMMEND US*



The Telford Homes brand delivers high quality, highly desirable new homes that are supported by first-class customer service.

Telford Homes Plc is a leading London-focused residential property developer. The Company specialises in creating, designing and building innovative landmark developments in some of the most desirable and sought after locations in the capital. The emphasis of a Telford Homes project is always focused foremost upon quality, luxury and exclusivity. A high specification, combined with some of the finest designer names, ensures that each individual property meets or exceeds the most demanding expectations. Architectural innovation and excellence ensures a true landmark development, while a fresh and imaginative approach to communal areas further ensures a truly luxurious lifestyle experience. That is why 99.5%* of customers surveyed in 2015* would recommend Telford Homes to their friends and family.

(*Independent satisfaction survey results average for the year 2015.)

Telford Homes Plc, Telford House, Queensgate, Britannia Road, Waltham Cross, Herts EN8 7TF.

These particulars are for illustration only. We operate a policy of continuous improvement and individual features such as kitchen and bathroom layouts, doors, windows and elevational treatments may vary from time to time. Specification details are for guide purposes only and remain subject to change without prior notice. Should a replacement be required this will be to an equal or higher standard. Consequently these particulars should be treated as general guidance only and cannot be relied upon as accurately describing any of the Specified Matters prescribed by any order made under the Property Misdescriptions Act 1991. Nor do they constitute a contract, part of a contract or a warranty. City North is a marketing name and may not form part of the final postal address. Computer generated images are indicative only and may be subject to change. Details correct at time of going to print E and Ĥ.



Jones Lang LaSalle Property Consultants Pte Ltd

CEA Licence No. L3007326E

9 Raffles Place #39-00 Republic Plaza

Singapore 048619

Tel: +65 6220 3888 Fax: +65 6225 3165

Intl.sales@ap.jll.com

www.jllresidential.com/sg/ips

Jones Lang LaSalle Property Consultants Pte Ltd for themselves and for the vendors or lessors of this property whose agents they are, give notice that the particulars do not constitute, nor constitute any part of an offer or a contract. All statements, contained in these particulars as to this property are made without responsibility on the part of Jones Lang LaSalle Property Consultants Pte Ltd, or vendors or lessors. All descriptions, dimensions, and other particulars are given in good faith and are believed to be correct but any intending purchasers or tenants should not rely on them as statements or representations of fact and must satisfy themselves by inspection or otherwise as to the correctness of the each of them. No person in the employment of Jones Lang LaSalle Property Consultants Pte Ltd has any authority to make or give any representation or warranty whatever in relation to this property. This is an overseas investment. As overseas investments carry additional financial, regulatory and legal risks, investors are advised to do the necessary checks and research on the investment beforehand.